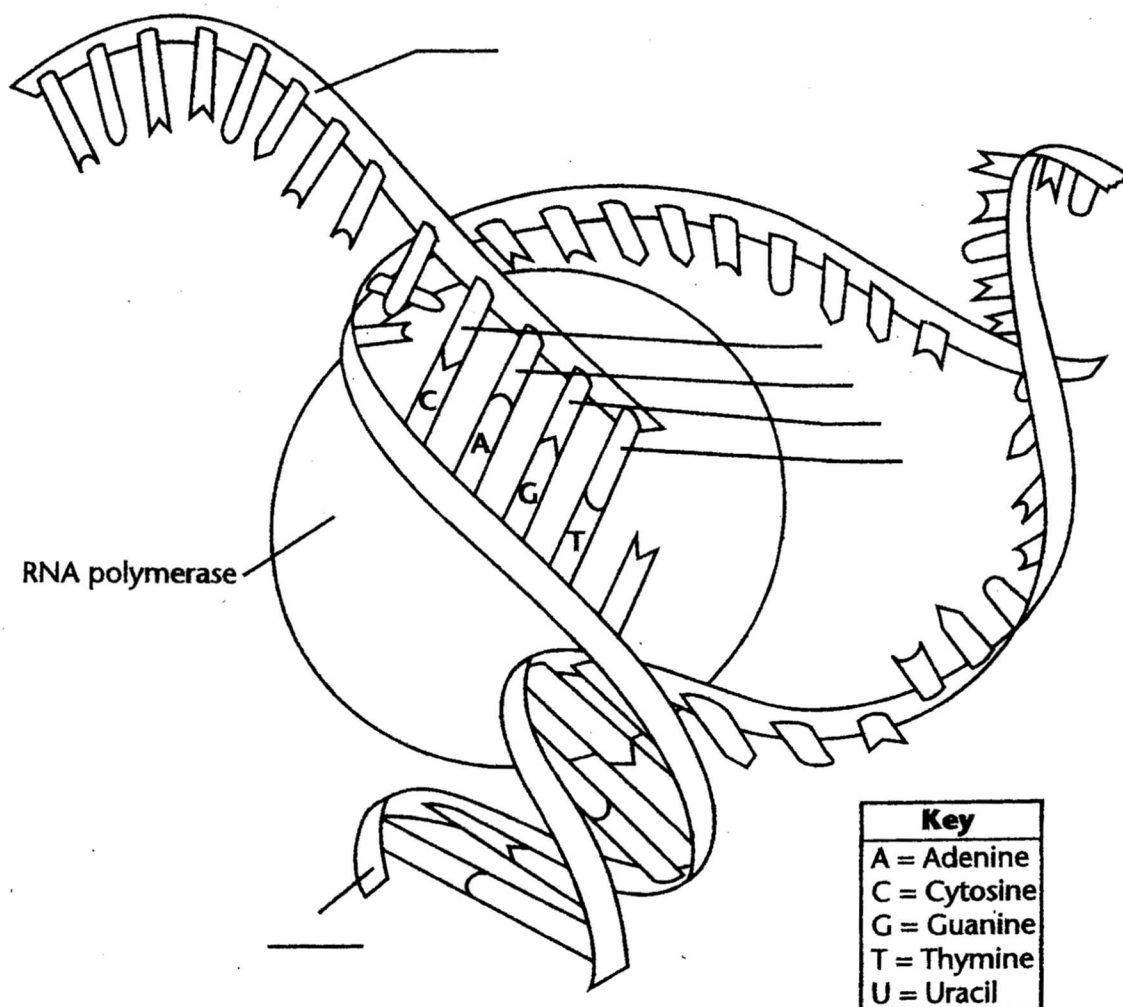


Transcription

In transcription, RNA polymerase splits the two halves of a strand of DNA. RNA then uses one half as a template to make a copy of the other half. RNA contains the nucleotide uracil instead of the nucleotide thymine.

Label the DNA and RNA. Then, label the missing nucleotides marked on the diagram.



Use the diagram to answer the question. Circle the correct answer.

1. In RNA, which nucleotide is always paired with uracil?

adenine guanine