

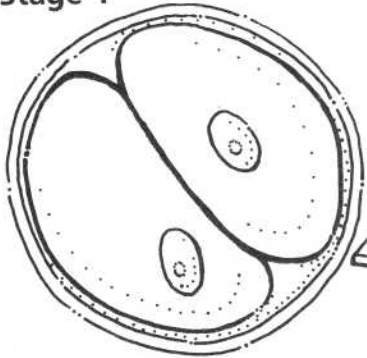
**Master  
38**

**Stages of Development  
in an Animal Egg**

**Reteaching Skills**

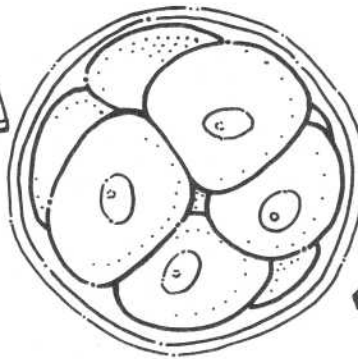
Use with Chapter 25, Section 25.1

Stage 1



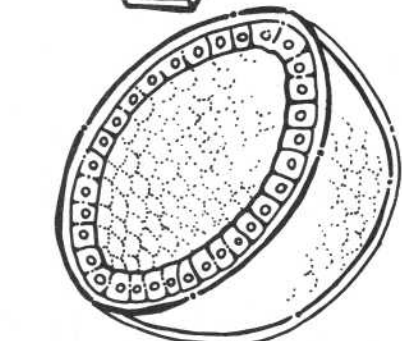
Two-celled stage

Stage 2



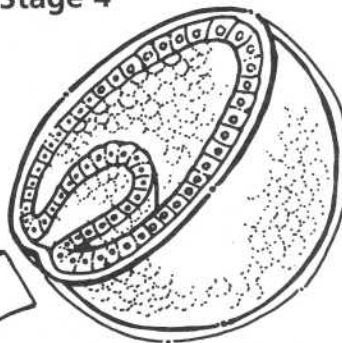
Eight-celled stage

Stage 3



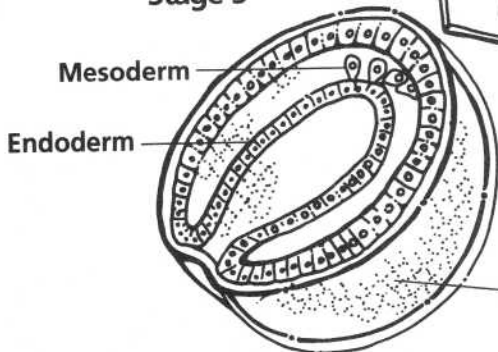
Blastula

Stage 4



Forming a gastrula

Stage 5



Cells of the endoderm  
break off to form the  
mesoderm

Ectoderm

**Worksheet**  
**38****Stages of Development  
in an Animal Egg****Reteaching Skills***Use with Chapter 25, Section 25.1***1.** Define these terms:**a.** cleavage

\_\_\_\_\_

**b.** blastula

\_\_\_\_\_

**c.** gastrula

\_\_\_\_\_

**d.** ectoderm

\_\_\_\_\_

**e.** endoderm

\_\_\_\_\_

**f.** protostome

\_\_\_\_\_

**g.** deuterostome

\_\_\_\_\_

**h.** mesoderm

\_\_\_\_\_

**2.** What are examples of groups of animals that follow these developmental strategies?**a.** protostome

\_\_\_\_\_

\_\_\_\_\_

**b.** deuterostome

\_\_\_\_\_

\_\_\_\_\_

**3.** Which group of animals does not go through the gastrula stage of development?

\_\_\_\_\_

\_\_\_\_\_

**4.** Where do mesoderm cells originate?

\_\_\_\_\_

\_\_\_\_\_