

THE CELL CYCLE WORKSHEET

Name: _____ Period: _____

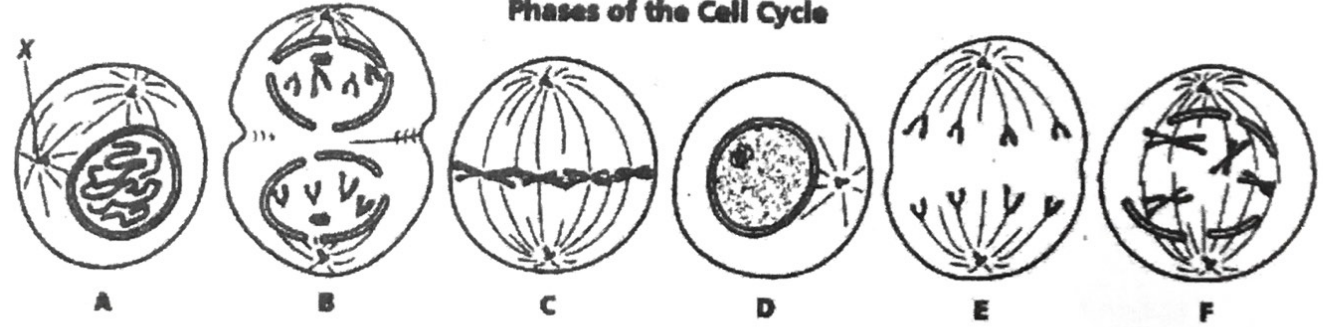
Matching: match the term to the description

- A. Prophase B. Interphase C. Telophase D. Metaphase E. Anaphase

- | | |
|--|---|
| _____ 1. The sister chromatids move apart | _____ 6. The chromosomes are moving towards the poles of the cell |
| _____ 2. New nuclear membrane forms around the chromosomes | _____ 7. Chromosomes are not visible |
| _____ 3. The cytoplasm of the cell divides | _____ 8. DNA is replicated |
| _____ 4. The chromosomes become invisible | _____ 9. Cell grows in size |
| _____ 5. The chromosomes are located at the equator of the cell. | _____ 10. Cell prepares for mitosis |

The diagram below shows cells in various phases of the cell cycle. Note the cells are not arranged in the order in which the cell cycle occurs. Use the diagram to answer questions 1-7.

Phases of the Cell Cycle



- _____ 1. List the diagrams in order from first to last in the cell cycle.
- _____ 2. What is the process by which a cell's nucleus divide to form two identical nuclei?
- _____ 3. Cells A & F show different stages of the same part of the cell cycle. What phase is it?
- _____ 4. Which cell is in metaphase?
- _____ 5. Which cell is in anaphase?
- _____ 6. Which cell is in the first phase of mitosis?
- _____ 7. Are the cells depicted plant or animal cells?
- _____ 8. What is the longest phase of the cell cycle?
- _____ 9. Why is the cell cycle important?
- _____ 10. At the end of mitosis, how do the number of chromosomes in the daughter cell compare to the parent cell?